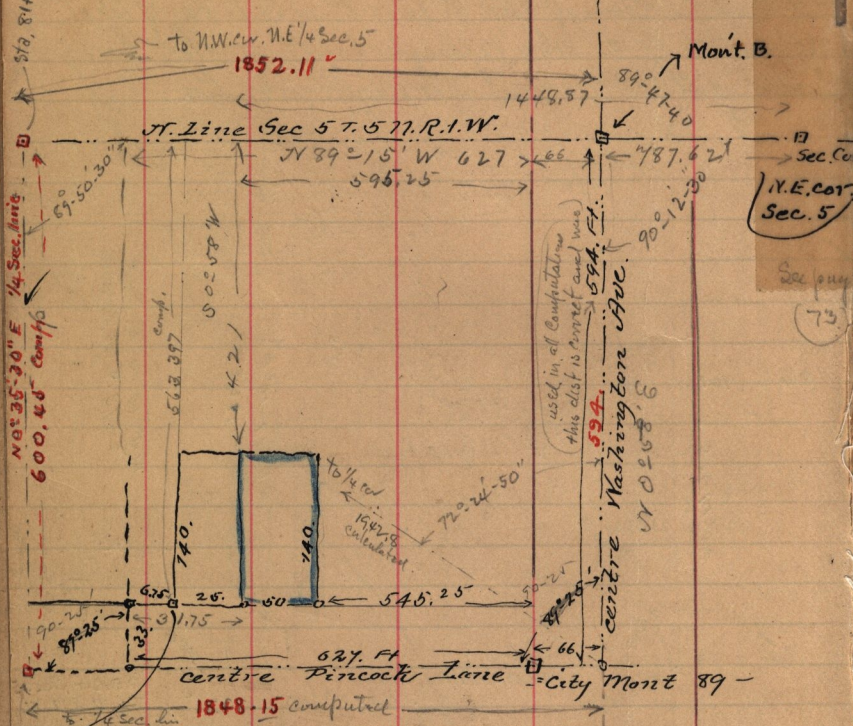


May 19-1892 - Survey made for Stephens, Bros  
Alonzo Stephens assist



812, 814, 47, 89  
 1/4 Sec. line  
 N 0° 35' 30" E  
 600.48 Comp'd  
 8145, 85

to N.W. cor. N.E. 1/4 Sec. 5  
 1852.11"

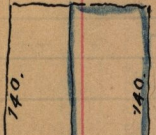
1449.57  
 89° 47' 40"  
 Mont. B.

T. Line Sec 5 T. 5 N. R. 1. W.  
 N 89° 15' W 627  
 596.25

N.E. cor. Sec. 5

used in all Computations  
 this dist is correct and was  
 574 Ft.

563.897  
 502.58 W  
 4.2



to 1/4 cor  
 1848  
 72° 24' 50"

627  
 25  
 60  
 546.25  
 90° 25'  
 89° 25'  
 627 Ft  
 Centre Pincock Lane  
 1848-15 computed  
 City Mont 89 -

s. E. Cor. Harris' tract  
 coming from the West  
 side of Sec. N.E. 1/4 Sec. 5.

Measured at 1848.25  
 (see page 73)

See page 73